

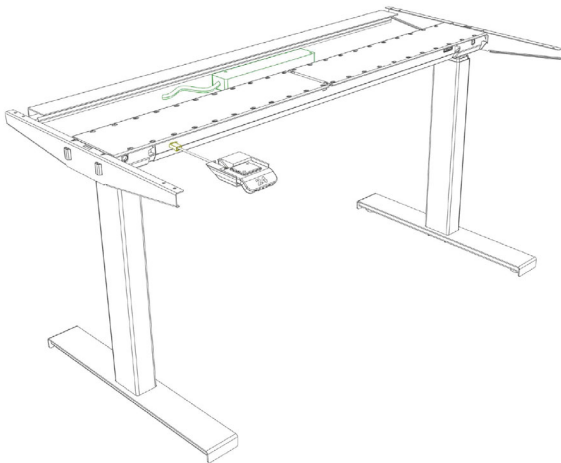


DF Series T-Base Assembly Guide

DF2-LT T-base (Shown)

DF2-ARC T-base

DF2-Oval T-base

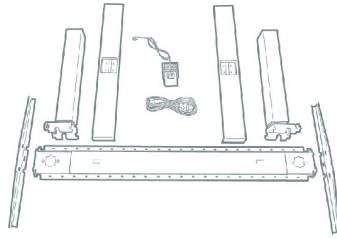


DF Series base assembly guide

Step 1

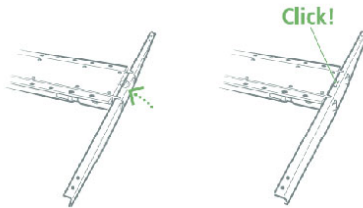
Inventory Parts included:

- (1) Adjustable center beam
- (2) Cantilever End brackets
- (2) Adjustable lift columns
- (1) Movement control switch
- (1) Power supply cable
- (2) Base feet
(style chosen with order)
- Optional (1) collision sensor dongle
- Misc. wood and machine screws



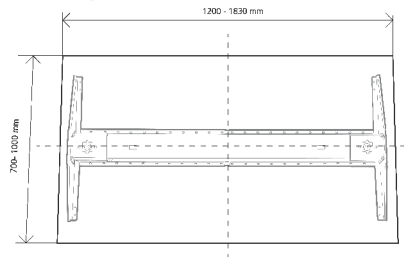
Step 2

- Mount Cantilever onto ends of the Adjustable beam



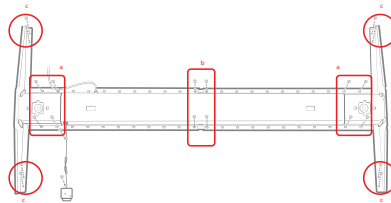
Step 3

- Mark the center of the top length and depth.
- Center beam on the top
- Adjust the beam to the desired length



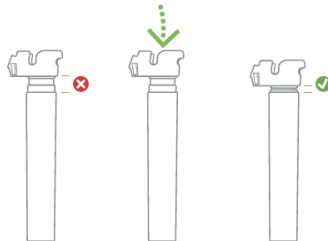
Step 4

- Attach Center beam and Cantilevers to the top with wood screws as shown in Red' Highlighted areas.



Step 5

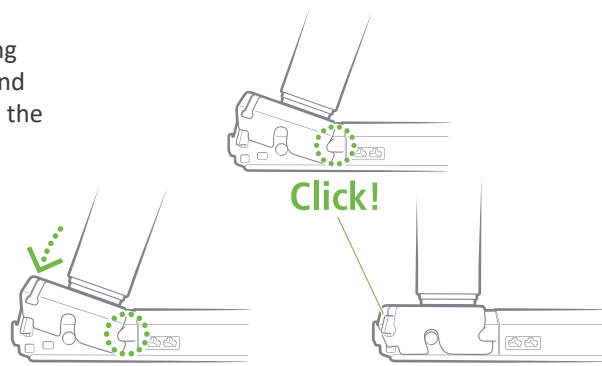
- Ensure columns are completely retracted
- Press column top down completely



Continued - next page

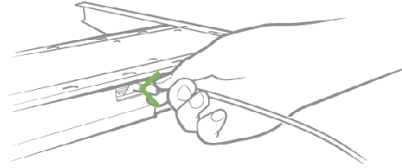
Step 6

- Tilt column to beam by pressing down until a 'Click' is heard and both pawls lock the column in the correct position



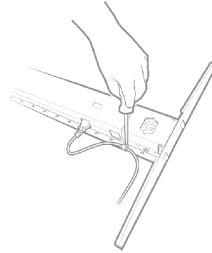
Step 7

- Plug Movement control switch in to DF center beam
- If included; Plug motion sensor Dongle into the DF Center beam



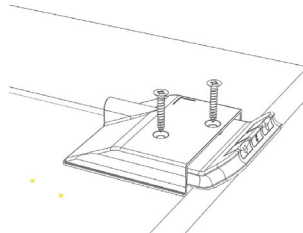
Step 8

- Secure Motion control cable and power supply cable to the bottom of the top.



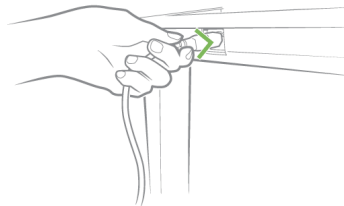
Step 9

- Position DP Switch body flush with Table front edge and in a comfortable location.
- Attach switch with Flat head screws
- Secure cable with cable clip



Step 10

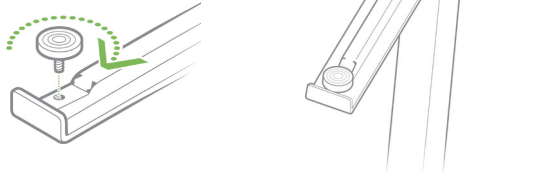
- Plug power supply into DF Center beam



Continued - next page

Step 11

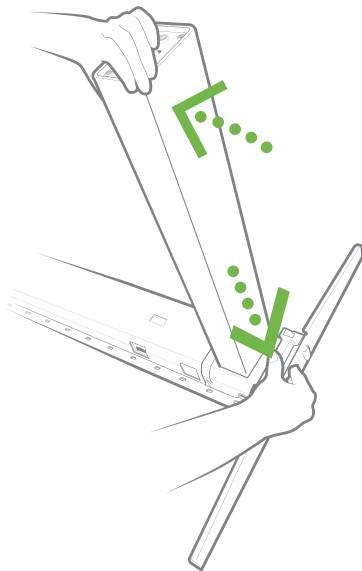
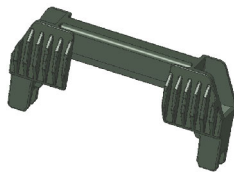
- Mount T-leg to the bottom of the lift Columns with Socket Head screws
- Screw in Adj. leveling glides



Disassembly of base

- Unscrew T-bases
- Depress Column paws with disassembly tool.
- Tilt column inward until it releases from the beam

Disassembly Base tool
Available on request
(Contact DesignForm)



Support Contacts:
www.designformmfg.com
(559) 412 4541