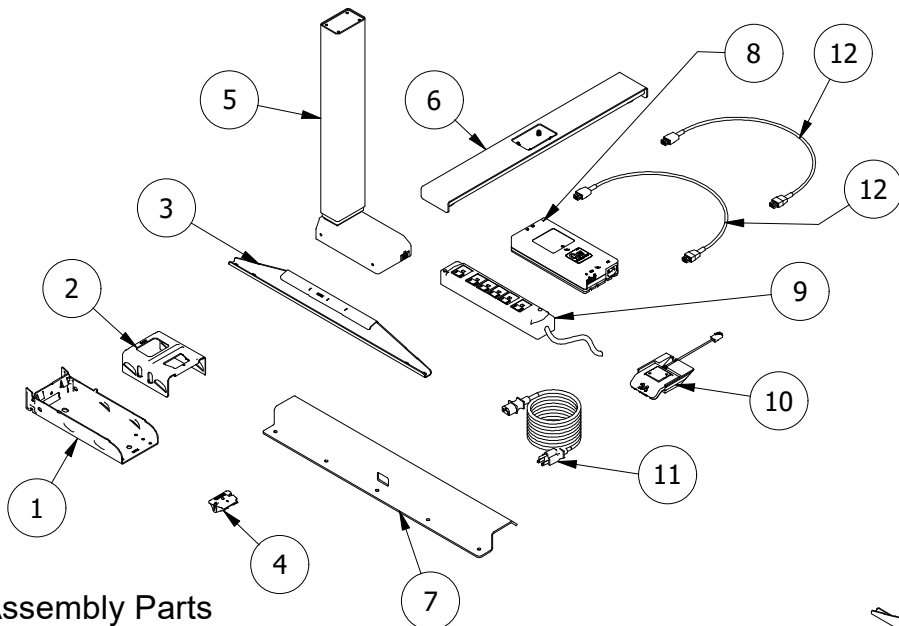
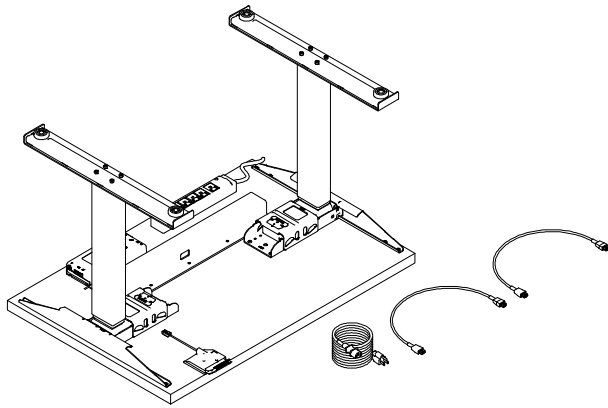


MDL21-24 | Series Base Assembly Instructions

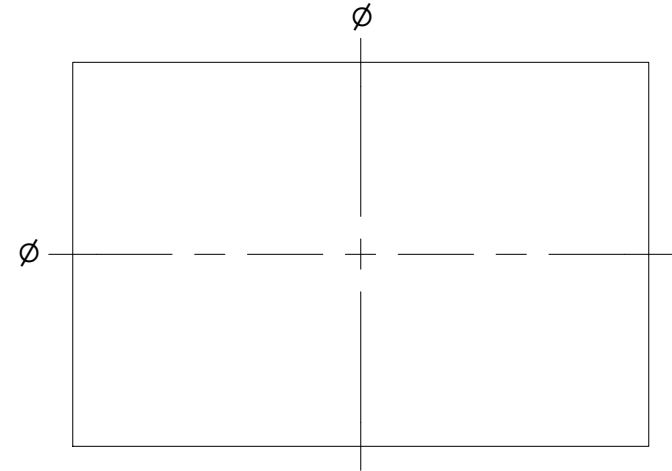


Assembly Parts

1. (2) MDL Bases w/ Screws
2. (2) MDL Base Covers
3. (2) MDL Cantilever brackets with Screws
4. (2) MDL Base Cover Locks
5. (2) MDL Lift Columns
6. (2) T-Style bases (LT - ARC -Oval)
7. (1) Wire Management Channel with Screws
8. (1) Two Station Control Box with Screws
9. (1) Power Strip with Screws
10. (1) Movement Control Switch with Screws
11. (1) Power Supply Cable x 10'
12. (2) Data Cables

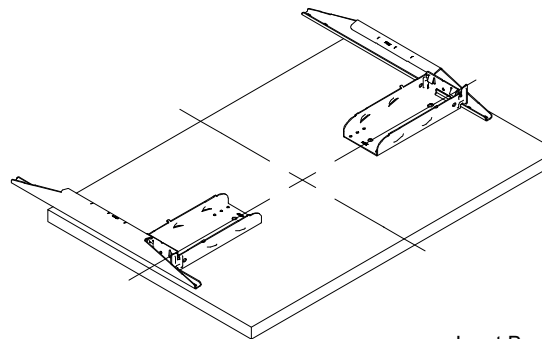
Step 1

- Place top bottom side up on the floor or work bench
- Mark center lines in the middle of top length and width

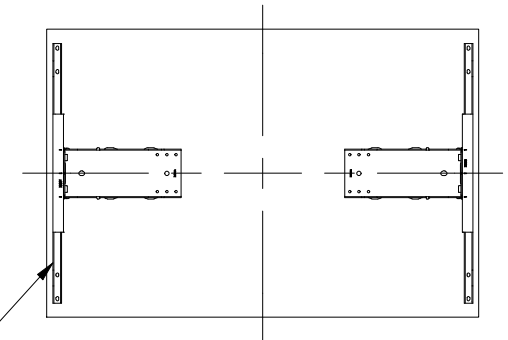


Step 2

- Place MDL Bases on Center Top Center lines
- Slide MDL Cantilever Brackets onto MDL Bases
- Center MDL Brackets on MDL Bases
- Screw down MDL Bases and MDL Cantilever Brackets



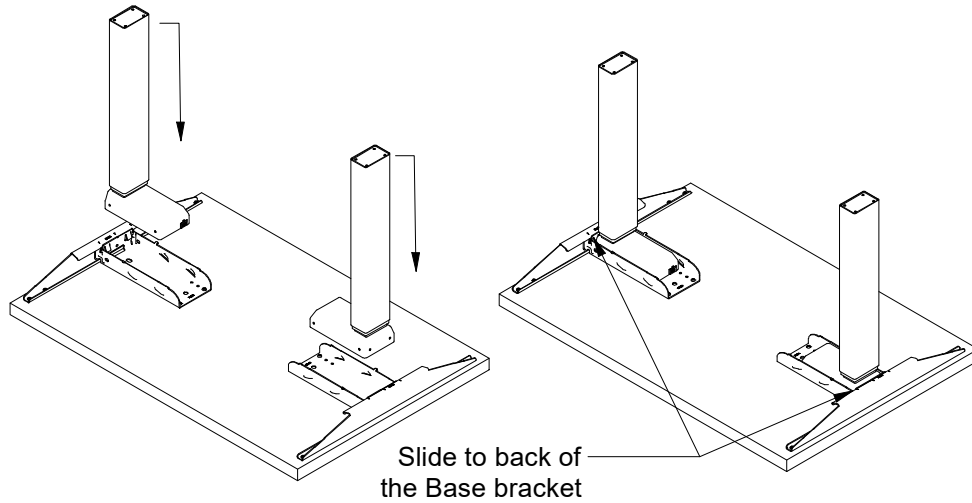
Inset Base from edge as needed



MDL21-24 | Series Base Assembly Instructions

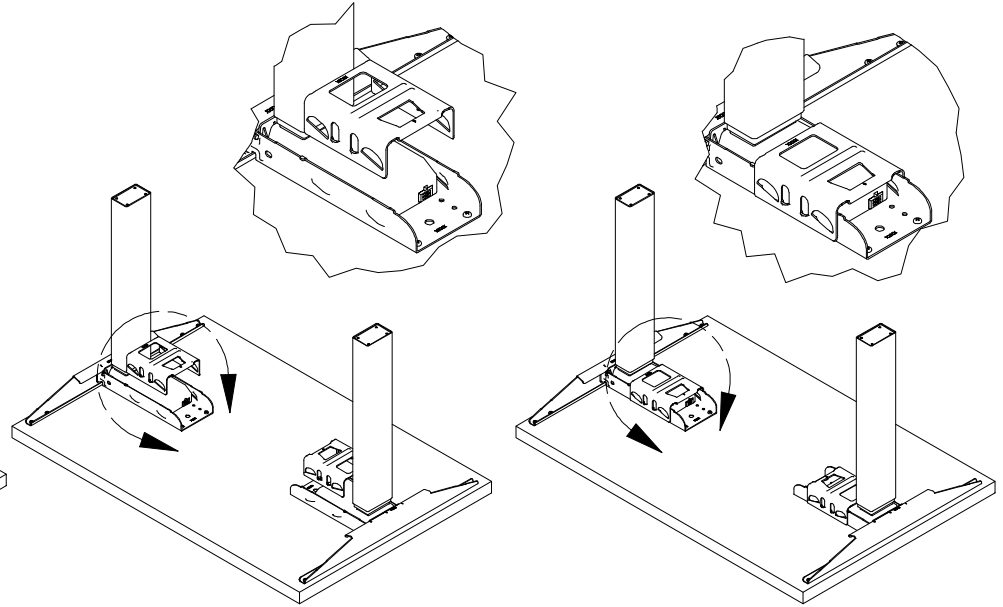
Step 3

- Place the lift column in the base
- Slide Lift column to the back of the base



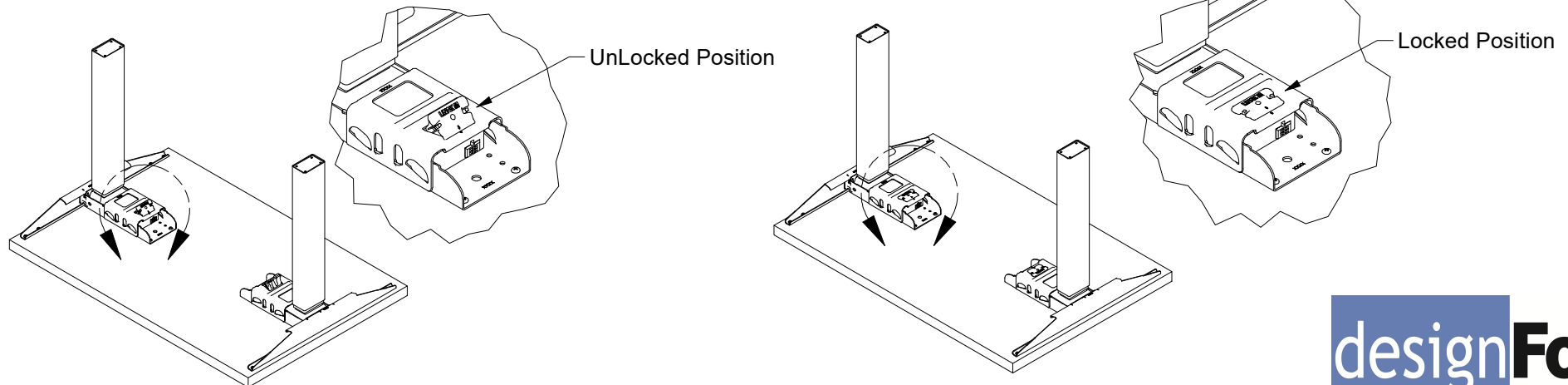
Step 4

- Place MDL Base Cover over Lift Column
- Push the Base Cover down until it 'Clicks' in place.



Step 5

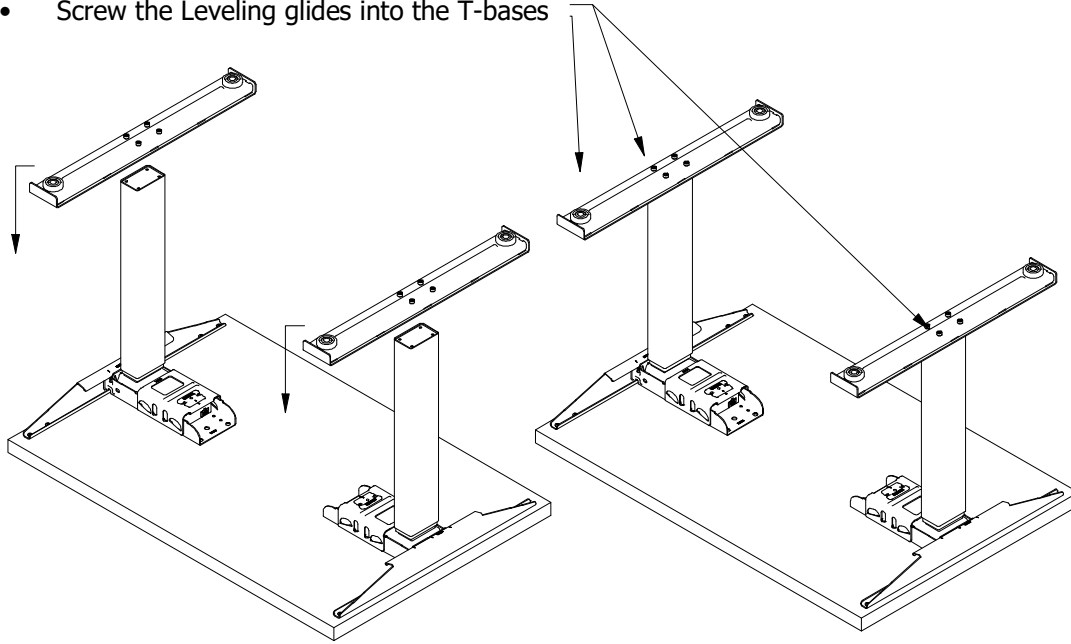
- Place the Base lock in the top of Base Cover bracket.
- With your foot, step down on the Base lock until it Tilts and 'Clicks' into place and locks the assembly.



MDL21-24 | Series Base Assembly Instructions

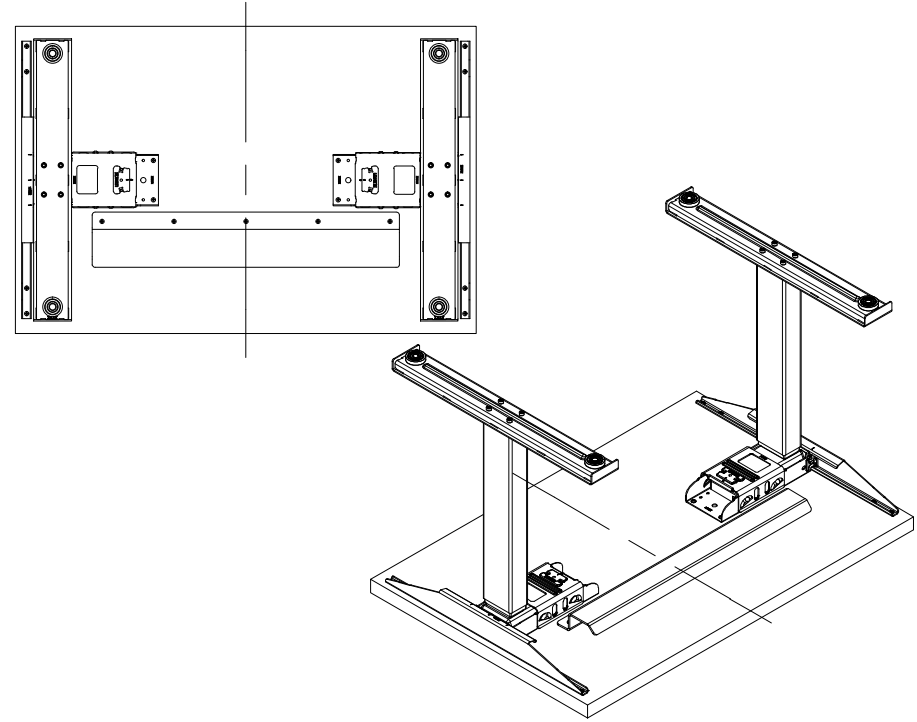
Step 6

- Insert the T-Style bases on the lift Columns
- Attach the bases with (4) Hex head screws
- Screw the Leveling glides into the T-bases



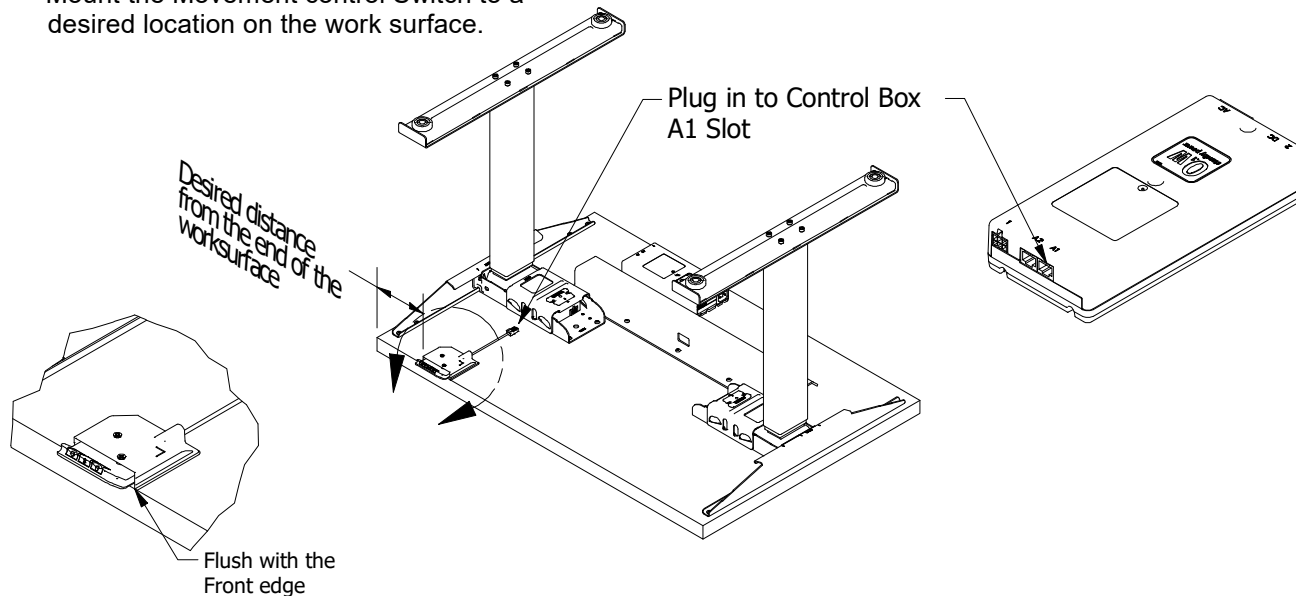
Step 7

- Center and Position the Wire management channel on the top
- Screw the Wire management channel down to the top



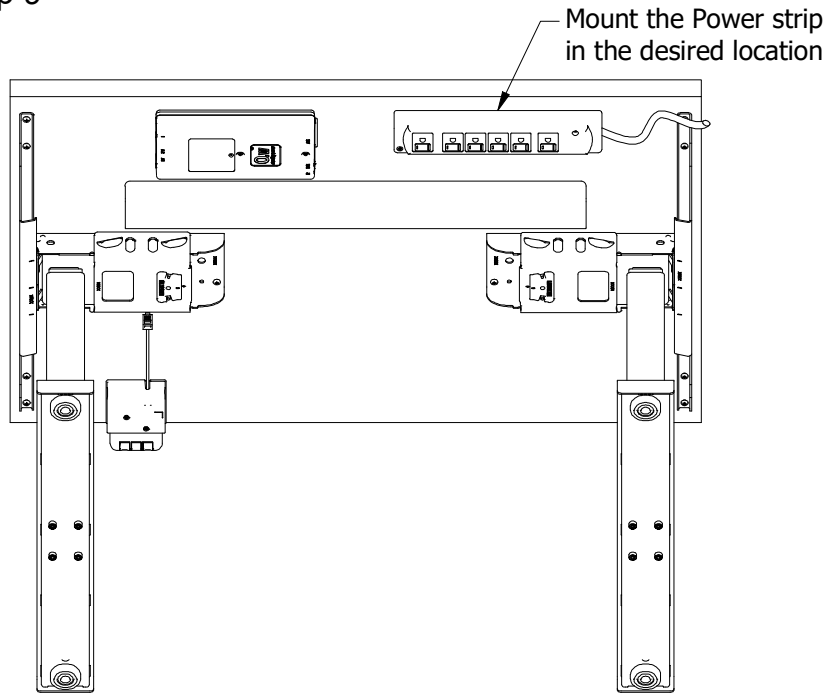
Step 8

- Mount the Movement control Switch to a desired location on the work surface.

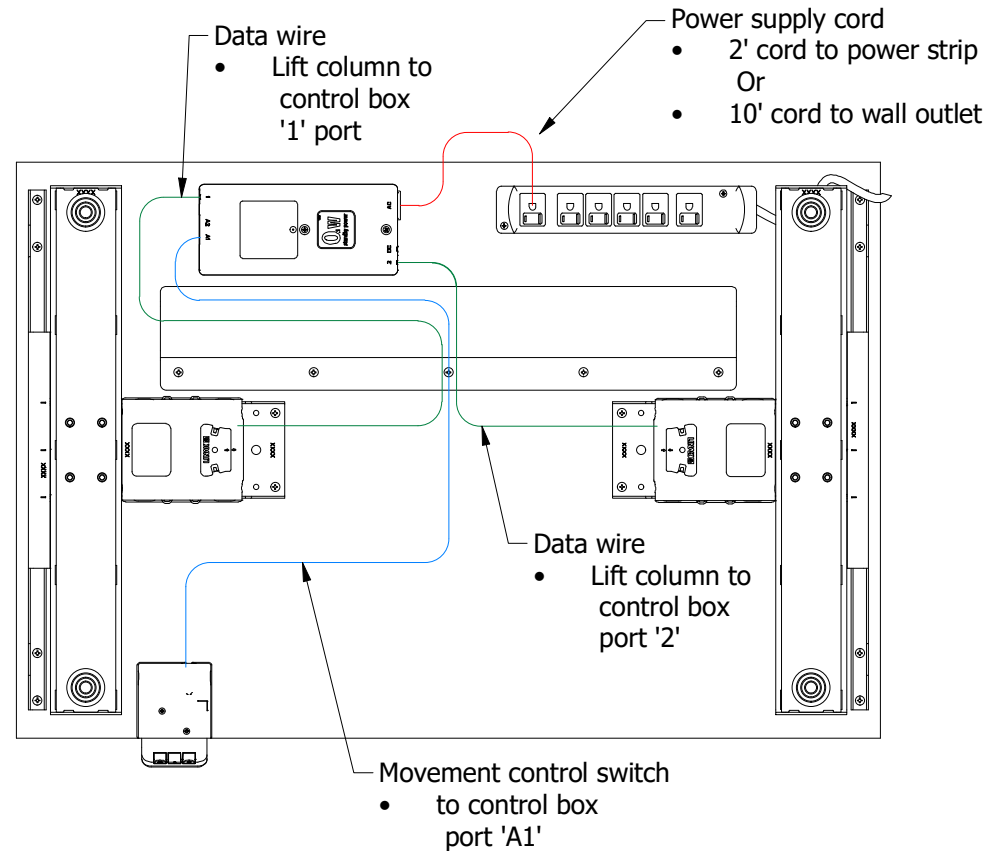


MDL21-24 | Series Base Assembly Instructions

Step 9



Step 10



Customer Support

- Online - www.designformmfg.com
- By Phone - (559) 412 4541 (9:00-5:00 | M-F | PST)